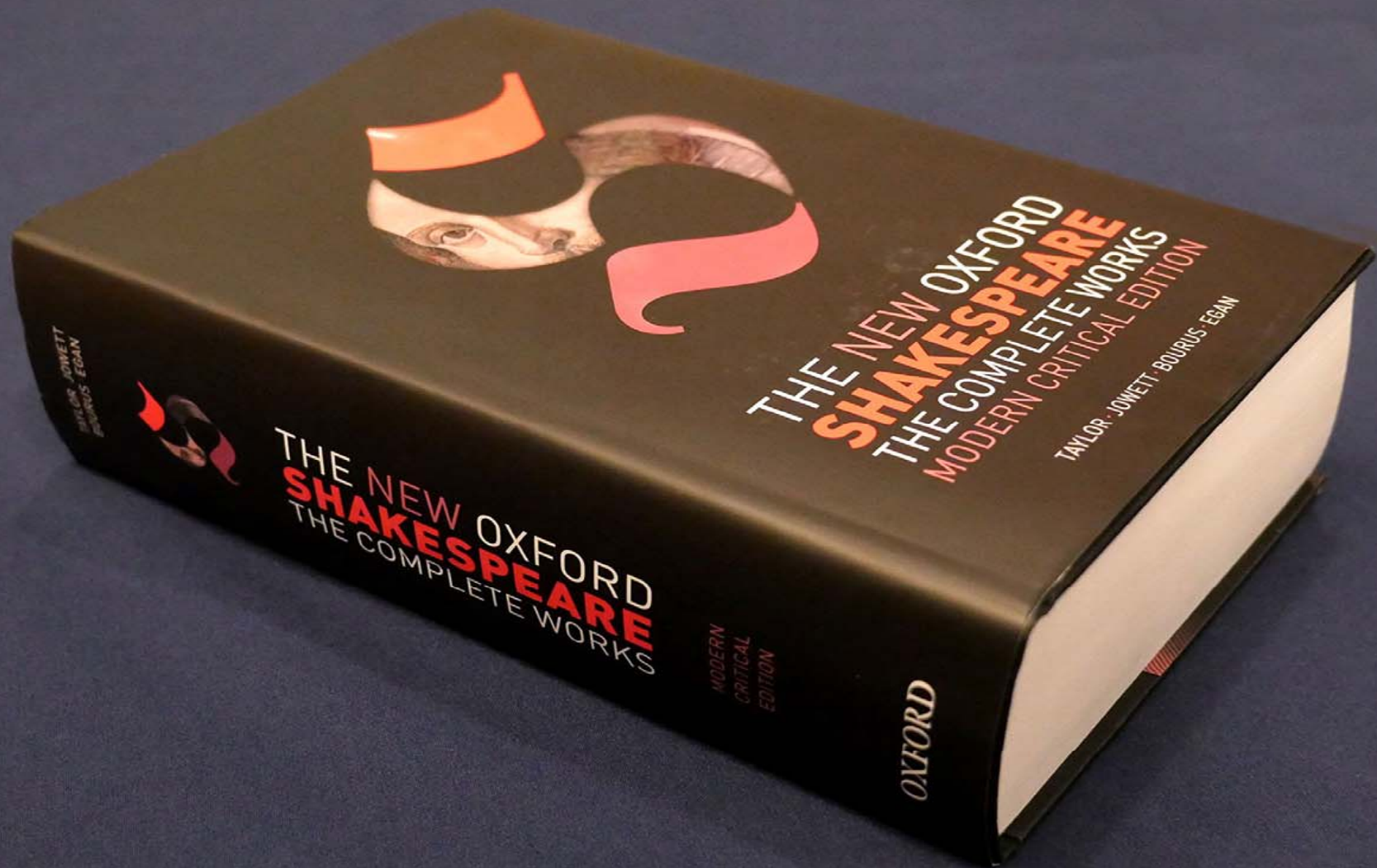


Is it okay that Shakespeare
provides the model for
scholarly digital editions of
early modern plays?

YES

YES

(with provisos)



TAYLOR · JOWETT
BOURIS · EGAN



THE NEW OXFORD
SHAKESPEARE
THE COMPLETE WORKS

MODERN
CRITICAL
EDITION

OXFORD

THE NEW OXFORD
SHAKESPEARE
THE COMPLETE WORKS
MODERN CRITICAL EDITION

TAYLOR · JOWETT · BOURIS · EGAN

<D Enter two Centinels.>

+<S1 1.><S2 First Sentinel> <IC>S</IC>Tand: who is that?

=<S1 2.><S2 Second Sentinel> Tis I.

<S1 1.><S2 First Sentinel> O you come most carefully vpon your watch,

<S1 2.><S2 Second Sentinel> And if you meete {Marcellus} and {Horatio},
The partners of my watch, bid them make haste.

\$<S1 1.><S2 First Sentinel> I will: See who goes there.

↓ ↓
<D Enter two Centinels.>

↓ ↓
+<S1 1.><S2 First Sentinel> <IC>S</IC>Tand: who is that?

↖ =<S1 2.><S2 Second Sentinel> Tis I.

<S1 1.><S2 First Sentinel> O you come most carefully vpon your watch,

<S1 2.><S2 Second Sentinel> And if you meete {Marcellus} and {Horatio},
The partners of my watch, bid them make haste.

↖ \$<S1 1.><S2 First Sentinel> I will: See who goes there.

<l>My men, like satyrs grazing on the lawns</l>

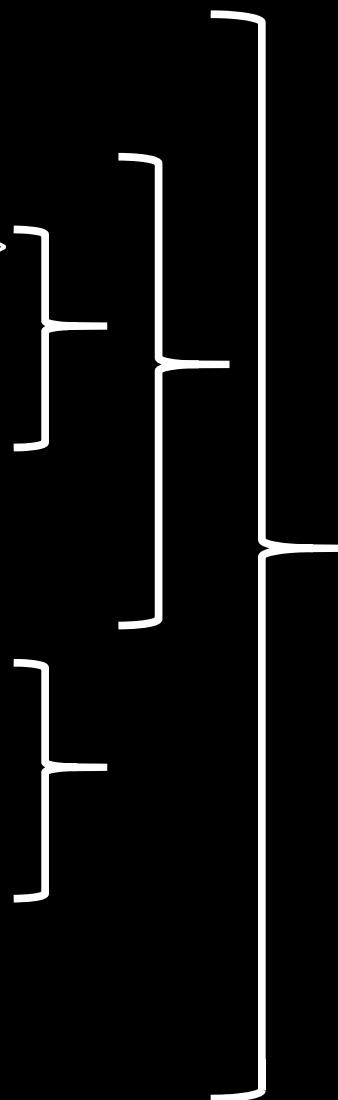

```
<l>My men, like satyrs  
  <app type="textual">  
    <lem wit="#JONES">grazing</lem>  
    <rdg wit="#MS">gasing</rdg>  
  </app> on the lawns </l>
```

```
<l>My men, like <app type="commentary">
  <lem>satyrs</lem>
  <note>woodland gods</note>
</app>
<app type="textual">
  <lem wit="#JONES">grazing</lem>
  <rdg wit="#MS">gasing</rdg>
</app> on the lawns </l>
```

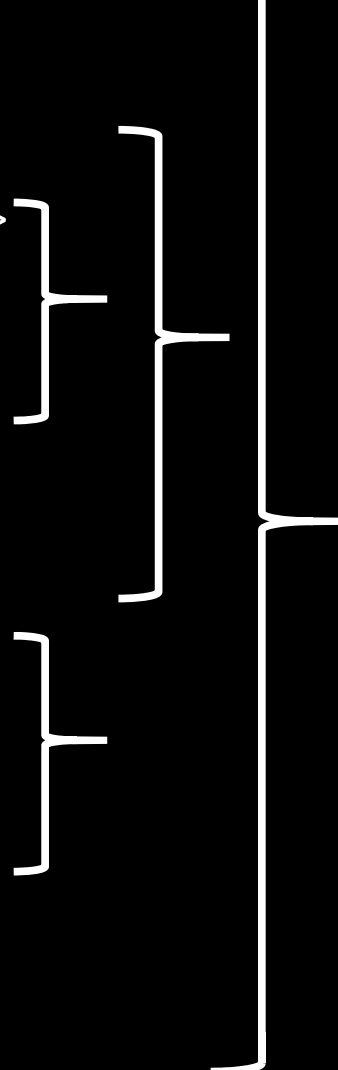
```
<l>My men, <app type="reception">
  <lem>like <app type="commentary">
    <lem>satyrs</lem>
    <note>woodland gods</note>
  </app>
  </lem>
  <note>In Jarman's film ...</note>
</app>
<app type="textual">
  <lem wit="#JONES">grazing</lem>
  <rdg wit="#MS">gasing</rdg>
</app> on the lawns </l>
```

```
<app type="lineation">
  <lem wit="#JONES">
    <l>My men, <app type="reception">
      <lem>like <app type="commentary">
        <lem>satyrs</lem>
      <note>woodland gods</note>
    </app>
  </lem>
  <note>In Jarman's film ...</note>
</app>
<app type="textual">
  <lem wit="#JONES">grazing</lem>
  <rdg wit="#MS">gasing</rdg>
  </app> on the lawns </l>
</lem>
<rdg wit="#SMITH">2 lines: satyrs |</rdg>
</app>
```

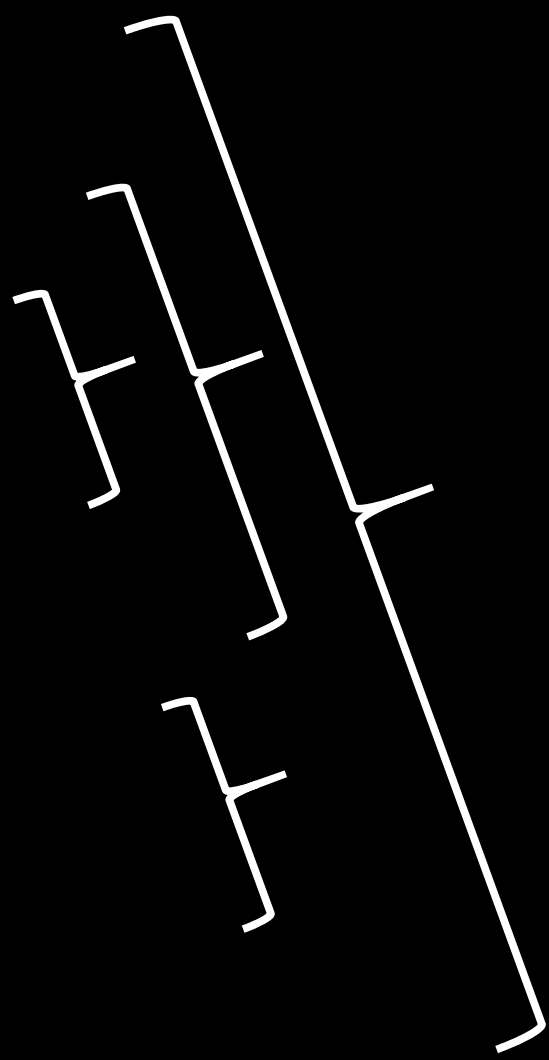
```
<app type="lineation">
  <lem wit="#JONES">
    <l>My men, <app type="reception">
      <lem>like <app type="commentary">
        <lem>satyrs</lem>
        <note>woodland gods</note>
      </app>
    </lem>
    <note>In Jarman's film ...</note>
  </app>
  <app type="textual">
    <lem wit="#JONES">grazing</lem>
    <rdg wit="#MS">gasing</rdg>
  </app> on the lawns </l>
</lem>
<rdg wit="#SMITH">2 lines: satyrs |</rdg>
</app>
```

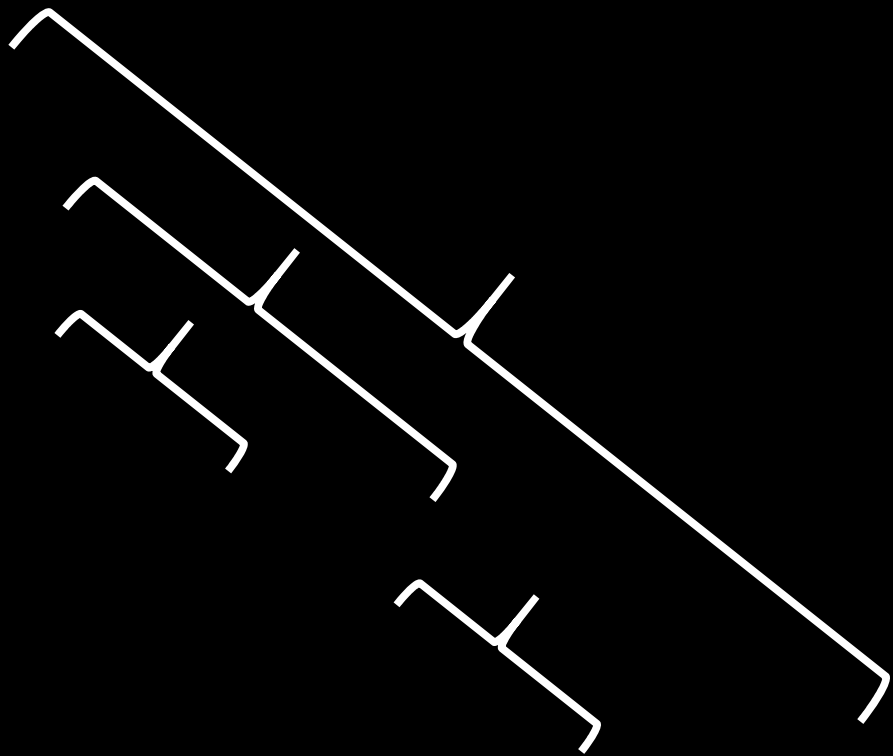


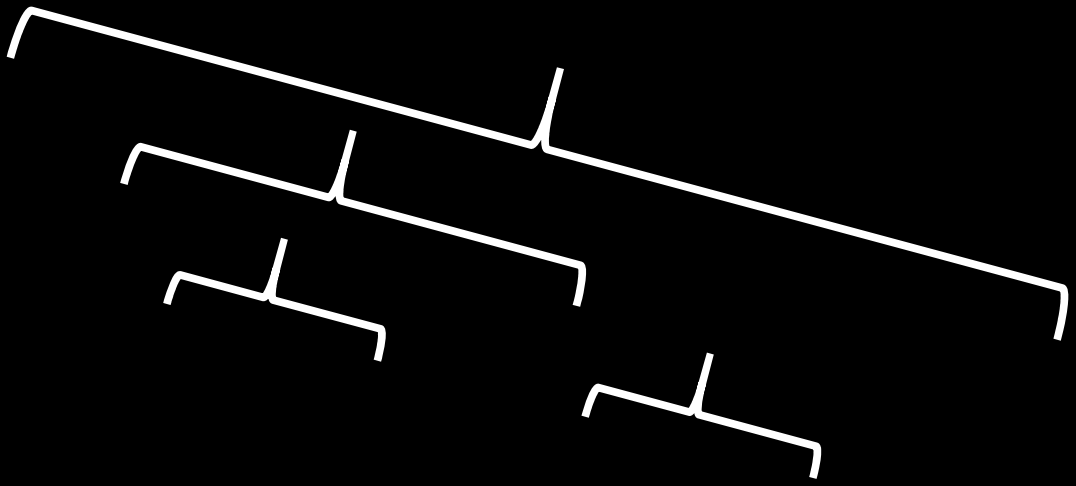

```
<app type="lineation">
  <lem wit="#JONES">
    <l>My men, <app type="reception">
      <lem>like <app type="commentary">
        <lem>satyrs</lem>
      <note>woodland gods</note>
    </app>
  </lem>
  <note>In Jarman's film ...</note>
</app>
<app type="textual">
  <lem wit="#JONES">grazing</lem>
  <rdg wit="#MS">gasing</rdg>
</app> on the lawns </l>
</lem>
<rdg wit="#SMITH">2 lines: satyrs |</rdg>
</app>
```

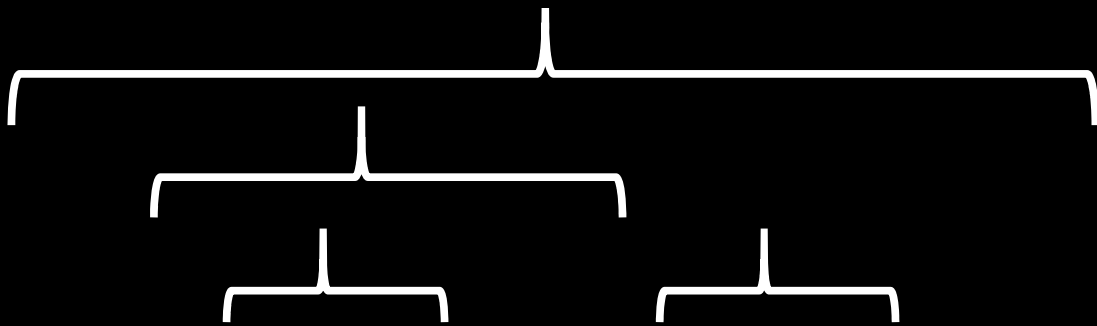


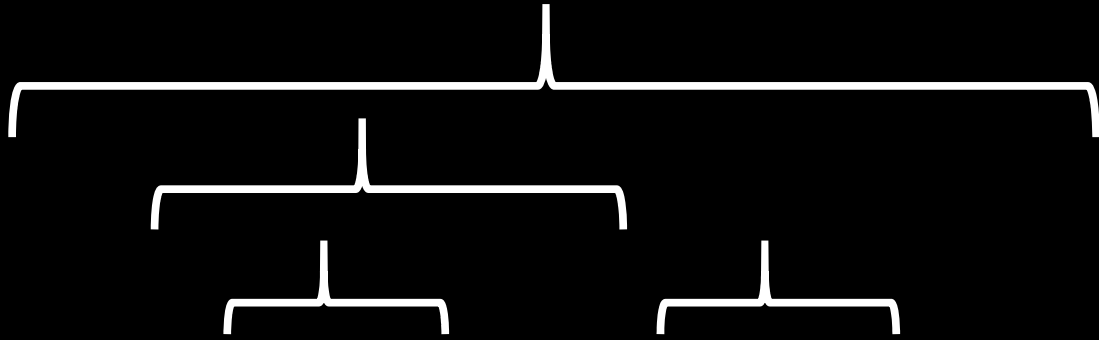


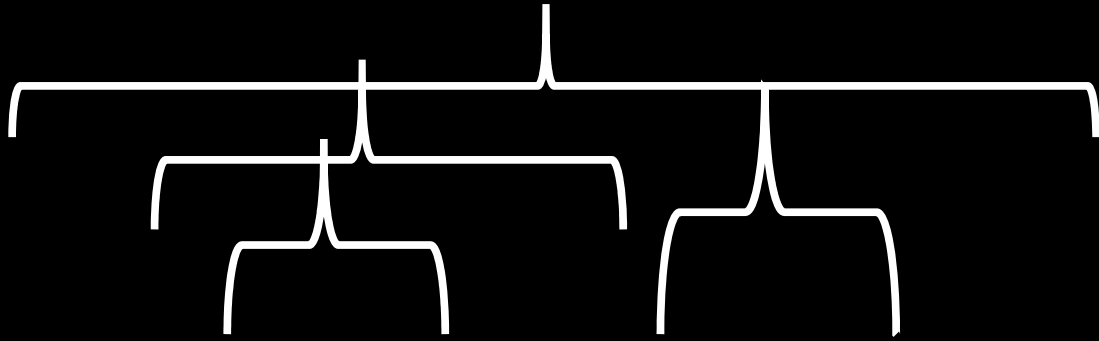


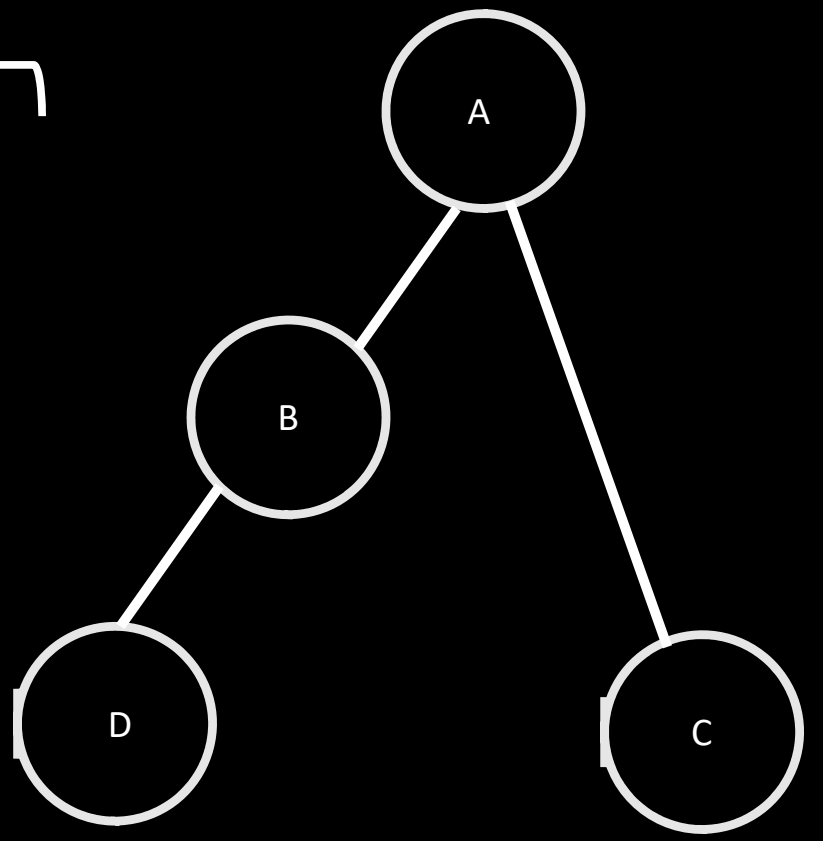
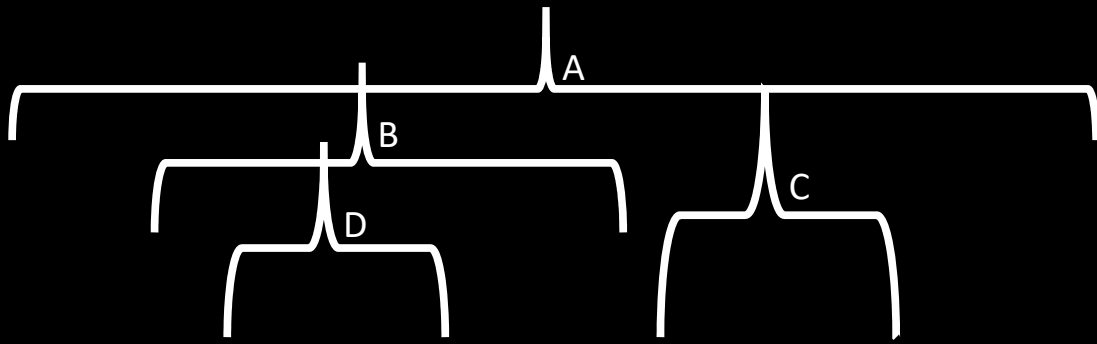


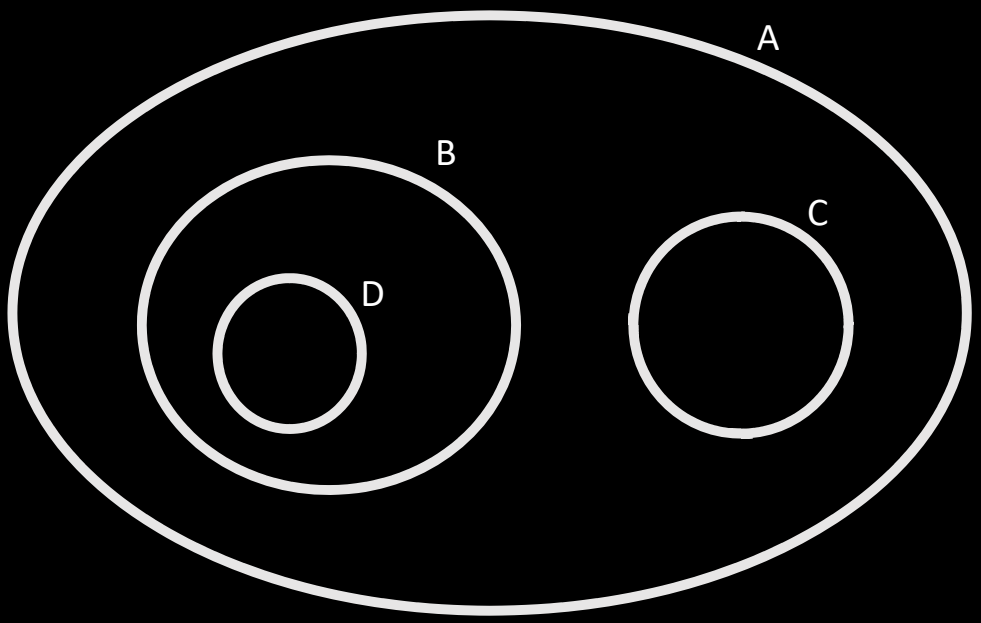
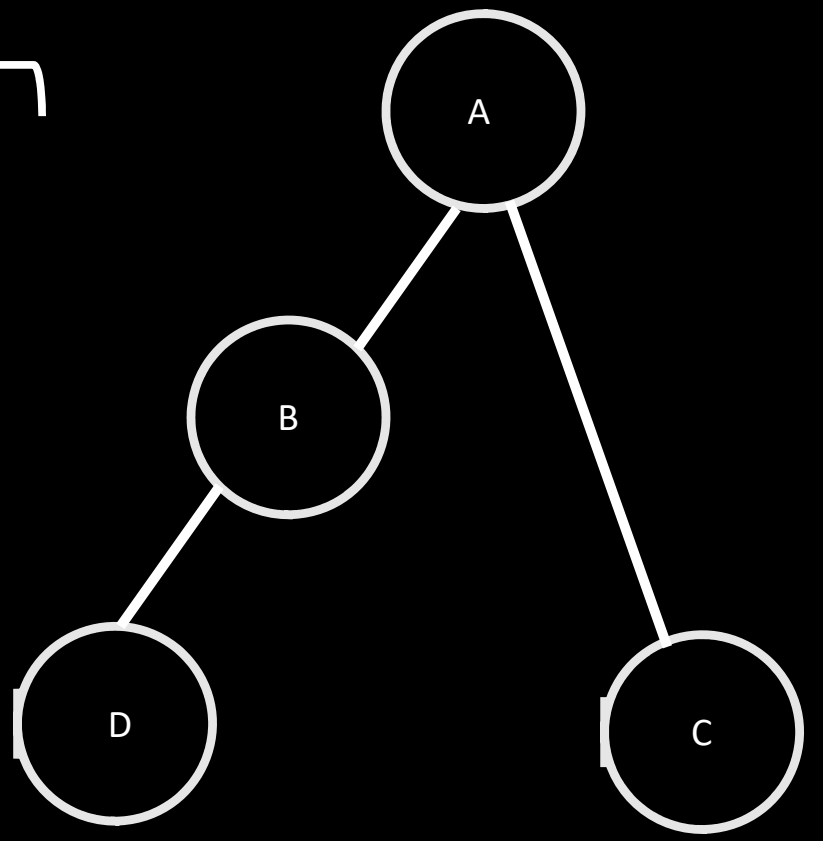
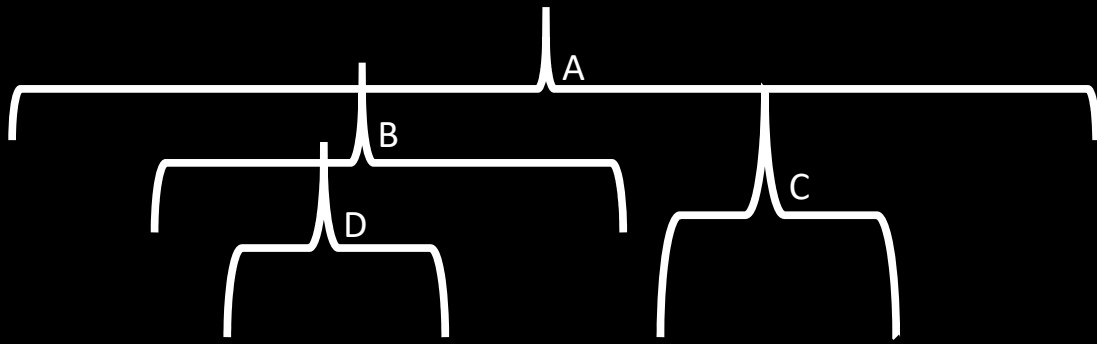






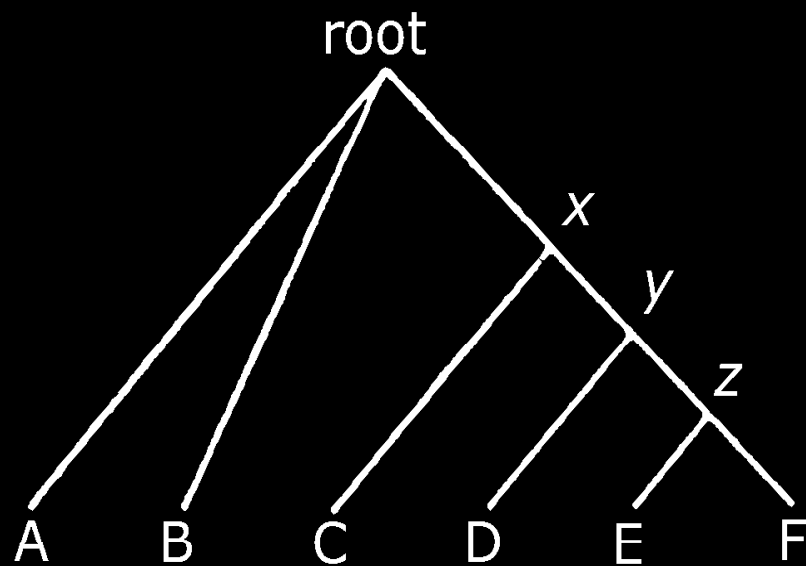




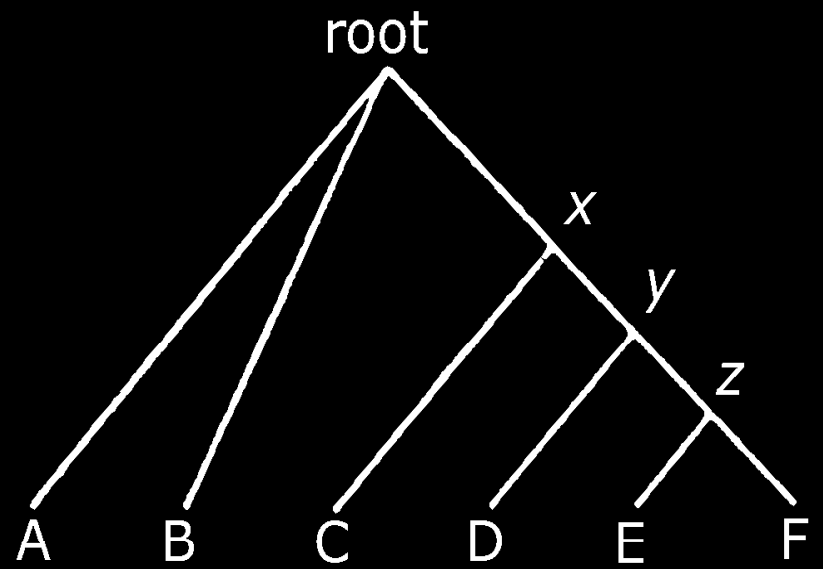


The whole matter is, of course, at bottom one of formal logic, and the necessary foundations are fully set forth by Russell and Whitehead in those sections of *Principia Mathematica* which deal with the ancestral relation ($*R$: see Pt. II, Sect. E, *90–*97, in Vol. i; also Introd. sect. VII and Appx. B in the second edition). No doubt, most of what is significant in the present essay could be expressed in their symbolism by any one sufficiently trained to its use.

$(x)A'\{A\}\{B\}\{C[D(EF)]\}$

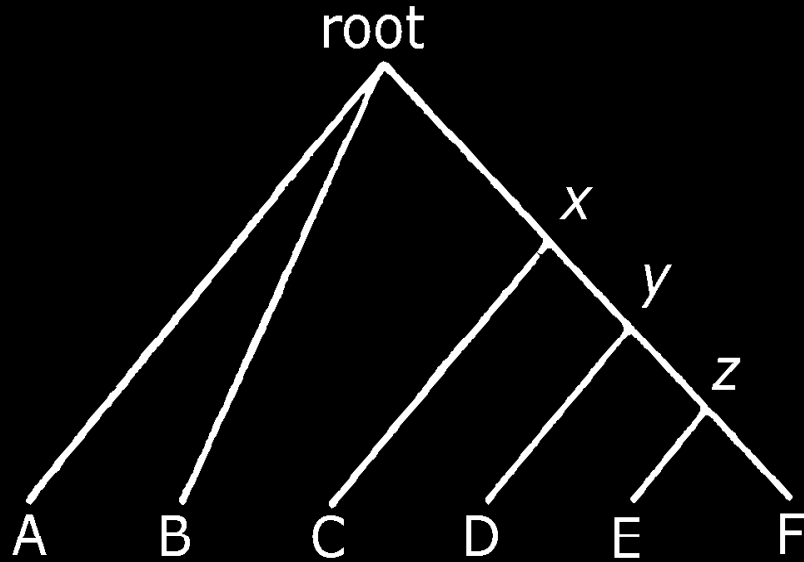


$(x)A\{A\}\{B\}\{C[D(EF)]\}$



```
<root>
  <A/>
  <B/>
  <x>
    <C/>
      <y>
        <D/>
          <z>
            <E/>
            <F/>
          </z>
        </y>
      </x>
    </root>
```

$(x)A'\{A\}\{B\}\{C[D(EF)]\}$



```
<root>
  <A/>
  <B/>
  <x>
    <C/>
      <y>
        <D/>
          <z>
            <E/>
            <F/>
          </z>
        </y>
      </x>
    </root>
```

Greg: A B { C [D (E F)] }

XML: <root><A/><x><C/><y><D/><z><E/><F/></z></y></x></root>

A constant refrain of TEI meetings was "that [regardless of what it was] is an implementation matter." This trump card was played at moments when the conversation was verging dangerously upon the practical. The implication was the following: we must not allow what is practical to impose upon the purity of our theory. It also happened to be a very safe gambit, as there was little chance of whatever was being discussed actually being implemented.

(Peter Robinson "How we been publishing the wrong way, and how we might publish a better way" *Electronic Publishing: Politics and Pragmatics* edited by Gabriel Egan (Toronto: Medieval and Renaissance Texts and Studies (MRTS) and ITER, 2010): 139-155 (pp. 139-140))

YES

providing...

- :: it's for a commercial publisher with an investment in XML/XSLT it wants to build on (by reusing code)
- :: you can live with the limitations imposed by the choices you made when Shakespeare was your model
- :: you don't care if your XML is theoretically impure and might never see the light of day when it is finished